

TPS[®]

THERMO PLASTIC SPACER
ADVANCED INSULATED GLAZING UNIT



VITRUM&GLASS
SINE VITRUM TENEBRÆ



Structure with TPS[®]
applied by extrusion



Traditional type of structure
with metal profiles
and drying salts

TPS[®]

It guarantees high, long-lasting
and constant performance
over the long term.

Certified gas seal.

It is the ideal product for prestigious
projects and for the most modern
applications

TPS[®]

Thermoplastic Spacer is the state-of-the-art solution
for next-generation insulated glazing units.

The idea

Creating a spacer by extrusion to ensure:

- the elimination of the traditional metal profile;
- the incorporation of desiccants;
- increased homogeneity;
- increased adhesion, even between processed surfaces;
- appropriate elasticity to solve structural tension;
- significant performance improvement.

TPS[®] is composed of a single polyisobutylene-based
component with integrated desiccant.

Therefore, this thermoplastic spacer replaces con-
ventional metal profiles, improving insulation signifi-
cantly.

All the main certification institutes, including ift
Rosenheim and TÜV Rheinland, have confirmed the
following characteristics:

- improved linear thermal transmittance (Psi
value) by up to 57%;
- improved temperature distribution on glass;
- reduced edge condensation;
- significantly reduced structural tensions acting
on the glass;
- efficient sealing that guarantees humidity pro-
tection and perfect gas tightness.

TPS[®]

is currently used in millions of glazing units installed
in most European countries, including Germany,
Austria, and Switzerland, and is suitable for both res-
idential and commercial applications.

Its versatility makes this system suitable for large
structural and safety glazing units. And now, TPS[®] is
also available for your needs.





Excellent performance even under the harshest conditions. The remarkable adhesion of the sealant ensures great stability and, together with elasticity, the absence of tension on the structure.

Thickness can range continuously from 6 to 20 mm (e.g. 7 mm) and is no longer bound to the thickness of the metal profiles.

Double glazed units whose thickness no longer depends on that of the metal profiles. Optimal lite alignment.

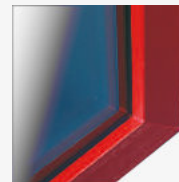
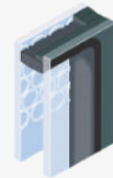
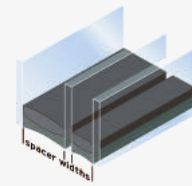
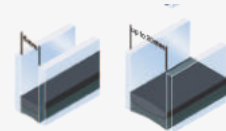
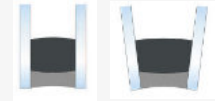
The profile adapts to processed glass and adheres perfectly to frosted or printed glass.

It can be used for making insulated glazing units with structural sealant and a stepped assembly system.

Holes are drilled with the same characteristics as the edges.

Superior aesthetic finish with only one surface between the lites. It reflects the colour of the frame based on the viewing angle.

Plenty of room for creativity and great versatility to create shapes.



mit 2022 - Nr. 31 - Anhangspalten 7 ARBEITSKREIS "WÄRMENÄHE" BF RAL

Datenblatt Psi-Werte Fenster

auf Basis messtechnischer Ermittlung der äquivalenten Wärmehitzleitfähigkeit der Abstreifenhalter

KÖMMERLING KÖMMERLING CHEMISCHE FABRIK GMBH
Zweitzentrale Straße 200
D-68554 Pirmasens

Profilbreite	Abstreifenbreite in mm	Material	Stärke in mm
16	5,0	Polystyrolglas	5,0

Abstreifenbreite in mm	Material	Stärke in mm	Wärmeleitfähigkeit $\lambda_{0,02}$ in W/mK
5,0	Polystyrolglas	5,0	0,043
5,0	Polystyrolglas	7,0	0,036
5,0	Polystyrolglas	10,0	0,036
5,0	Polystyrolglas	12,0	0,038

Abstreifenbreite in mm	Material	Stärke in mm	Wärmeleitfähigkeit $\lambda_{0,02}$ in W/mK
5,0	Polystyrolglas	5,0	0,038
5,0	Polystyrolglas	7,0	0,034
5,0	Polystyrolglas	10,0	0,034
5,0	Polystyrolglas	12,0	0,036

Für alle SZR verwendbar

Material	Stärke in mm	Wärmeleitfähigkeit $\lambda_{0,02}$ in W/mK
Alu	1,5	0,40
Alu	2,0	0,31

Die äquivalente Wärmehitzleitfähigkeit wurde nach dem Verfahren des DIN EN 12909 mit einem Abstand von 20 mm zwischen den Abstreifen ermittelt. Die Werte sind für einen Abstand von 20 mm zwischen den Abstreifen gültig. Bei anderen Abständen sind die Werte entsprechend anzupassen. Die Werte sind für einen Abstand von 20 mm zwischen den Abstreifen gültig. Bei anderen Abständen sind die Werte entsprechend anzupassen. Die Werte sind für einen Abstand von 20 mm zwischen den Abstreifen gültig. Bei anderen Abständen sind die Werte entsprechend anzupassen.

TPS® ensures top of the range psi values

	Aluminium	PVC	Wood	Wood and Aluminium
<p>U_g = 1,1 W/m²K</p>	0,043	0,036	0,036	0,038
<p>U_g = 1,1 W/m²K</p>	0,038	0,034	0,034	0,036



Vitrum & Glass S.r.l.

Capitale sociale €117.000 i. v.
Registro Imprese Savona
VAT code IT, Partita Iva,
Codice Fiscale n. 00884410093

Registered office
Strada Ville, 48 C7D/E/F
17014 Cairo Montenotte
SV Italy

Contacts
+39 019 5070 61
info@vitrumandglass.it
www.vitrumandglass.it

